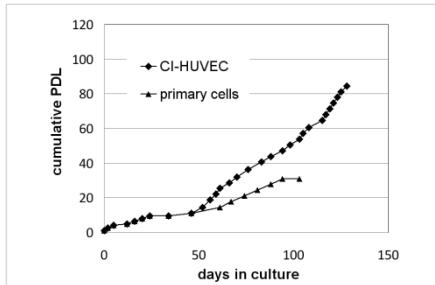
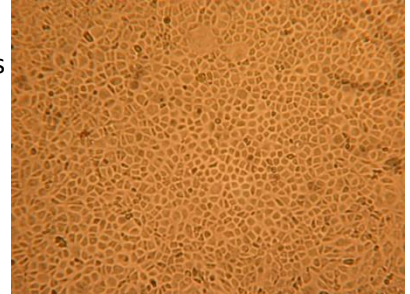


## Functional Immortalization – CI-HUVEC Physiological Relevant Endothelial Cell Line



The functionally immortalized CI-HUVECs show a robust proliferation. The cells display a cobblestone morphology, typical for endothelial cells.



Marker	Primary HUVECs	CI-HUVECs
PECAM1 (CD31)	✓	✓
VEGFR2 (CD309)	✓	✓
TIE1	✓	✓
TIE2	✓	✓
ICAM1 (CD54)*	✓	✓
E-Selectin (CD62)*	✓	✓
VCAM (CD106)*	✓	✓
Acetylated LDL uptake	✓	✓
eNOS activity	✓	✓

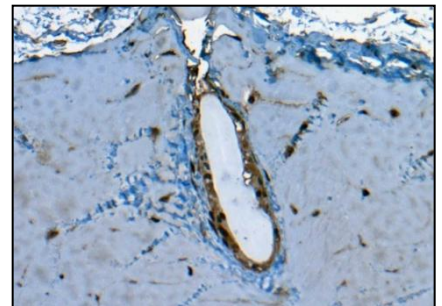
Functionally immortalized CI-HUVECs display endothelial specific markers and functions similar to primary HUVECs.

\*analysis upon TNF stimulation



*in vitro*

### Angiogenesis assay



*in vivo*



**Cellular Screening Technologies**

Inhoffenstraße 7 |  
D-38124 Braunschweig | Germany

*Phone* +49 (0) 531 – 6181-5080

*Fax* +49 (0) 531 – 6181-5002

[info@inscreenex.com](mailto:info@inscreenex.com)